

DEVORE RURAL PROTECTION ASSOCIATION

Bring the family out for a night of fun

DRPA SPONSERED FUNDRAISER

BINGO

FAMILY FUN NIGHT



SATURDAY JUNE 17TH [AT] 5PM

[AT] MOMS COUNTRY STORE

(18100 KENWOOD AVE)

**BINGO
CARDS \$2**

Games • Food for Purchase • Prizes

GRAND PRIZE: ring



1 Item Donation = 1 Bingo Card for 1 Game

ONLY 1 FREE GAME FOR DONATIONS

MILITARY APPRECIATION

LET'S SHOW OUR TROOPS

LOVE AND SUPPORT

(DONATION ITEM FOR CARE PACKAGE)



Examples of care package items: toiletries, cards games, travel size items, snacks, sanitizers, medicine, etc

BRING A CHAIR

We also will have supplies to make our Heroes cards. All cards and care packages get sent to our Troops around the world.



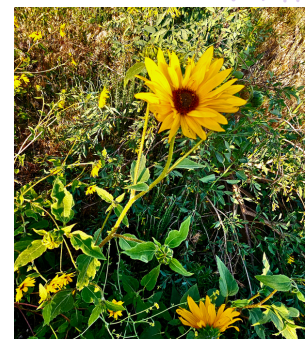
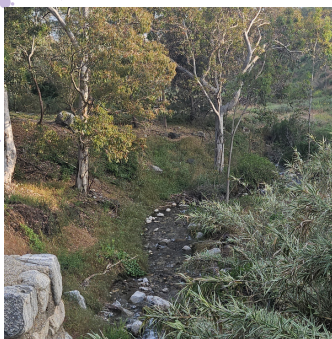
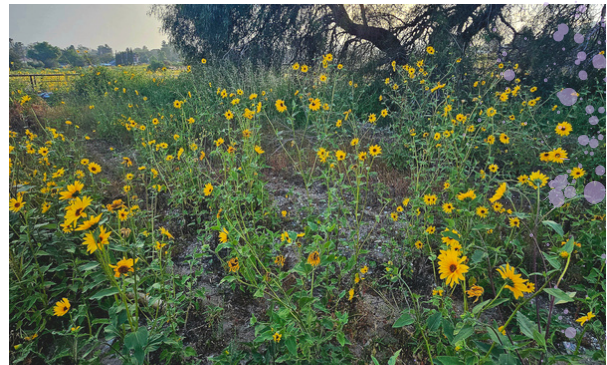
DEVORE RURAL PROTECTION ASSOCIATION

June 2023

BRINGING FORTH THE CONSENSUS OF THE COMMUNITY. KEEPING YOU INFORMED



Spring in Devore



On average, it is a maximum 79° during the day in the month May in Devore and around 59° at night





DEVORE RURAL PROTECTION ASSOCIATION

BRINGING FORTH THE CONSENSUS OF THE COMMUNITY. KEEPING YOU INFORMED



BURRTEC

"We'll Take Care Of It"



As of July 1, 2023, Burrtec Waste will implement the new law (SB1383) which includes EVERYONE in Devore if you have a dumpster or trash cans:

If you have a dumpster you will be **REQUIRED** to have two extra cans at another expense – 1=organics and 1=recyclables. If you only have trash cans you will be **REQUIRED** to separate your trash into three categories:

- **Organics (green can)** = food waste, green waste (lawn cuttings) tree branches with the exception of Bird of Paradise, cactus and palm fronds, leaves, fruits, veggies, garden plants, and branches need to be cut in 3-foot lengths – **NOT ACCEPTED:** animal waste, plastic bags, dirt, rocks.
- **Recyclables (blue can)** = cans (empty), bottles(empty), plastics, newspaper, cardboard boxes broken down but no styrofoam, plastic carrier bags (grocery bags), empty aerosol cans, kitchen foil, jars, cereal, egg cartons, detergent bottles, shampoo bottles, empty and dry paint cans. **NOT ACCEPTED:**
- Auto and household batteries, clothing, diapers, plastic packaging or bags, vinyl hoses, soiled paper products, styrofoam or tires
- **Trash** = which can include animal waste.

Prohibited Items NOT ALLOWED IN ANY BIN/CAN- batteries household and car, chemicals, dead animals, electronics/e-waste, light bulbs, LEDs bulbs, medical waste including pharmaceuticals, motor oil, pesticides, or tires. No hazardous materials in ANY receptacles.

As of May 24th Burrtec they do NOT have a price for any of the mandated receptacles above because the County is adding their fee on top of the new mandates.

Burrtec Waste (909) 889-1969

A WEEKEND OF UPCOMING EVENTS

Provided from Devore Fire Safe Council

CHIPPER DAYS

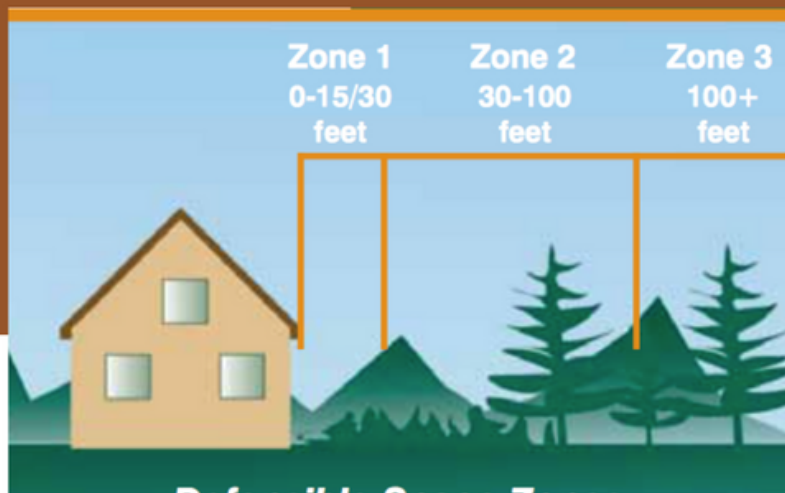
June 11th-10AM-2PM

At 1511 Devore rd Fire Station 2

Dump Day

June 10th 8am- 12pm

At Devore Community Church

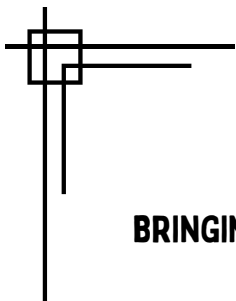


*CHIPPER DAYS-Create a defensible space around your home. Residents are invited to bring cut brush and branches.

*DUMP DAY (provided by SWMD)- **NO HAZARDOUS WASTE, NO TIRES AN NO ELECTRICAL DISPOSAL**

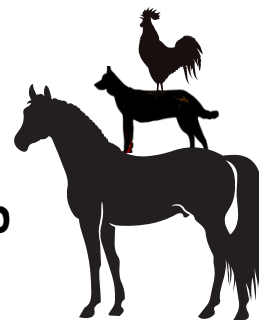
For Questions Contact our local Fire Safe Council
Nanette Van Esh- 909-289-4950





DEVORE RURAL PROTECTION ASSOCIATION

BRINGING FORTH THE CONSENSUS OF THE COMMUNITY. KEEPING YOU INFORMED



Community Updates

DEVORE COMMUNITY CHURCH

Community Church of Devore

1431 Devore Road

San Bernardino, CA 92407

Contact: devoretruth@gmail.com

(909) 880-4160

Service Times

Sunday: 10:30 AM

Wednesday: 6:30 PM



UPCOMING EVENTS

- Dump Day June 10th 8am-12PM
- Chipper Days June 11th
- Devore water meeting:
June 13 @ 7pm
- Bingo family night at Moms
Store: 5 pm June 17th

DRPA sponsored \$850 to the Youth group going to Knotts Berry Farm for memorizing 13 Bible verses!!

- Join us for our Wednesday Evening Service!
Services include weekly Bible Prophecy
Updates and Teaching
- Mens' Bible Study: June 8th and 22nd @ 6:30



"Devore's Taco Lady"

Wednesday-Saturday

(Some Saturdays vary)

Stay Informed

Follow Devore's New Facebook





DEVORE RURAL PROTECTION ASSOCIATION

BRINGING FORTH THE CONSENSUS OF THE COMMUNITY. KEEPING YOU INFORMED

CRIME AND SAFETY



Credit Car theft? Here's what to look for

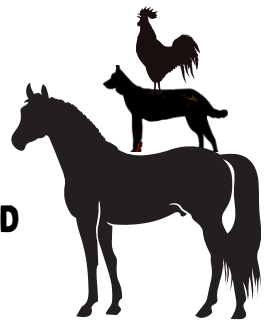
- Warning signs
- Bank and credit card statements list withdrawals or purchases you don't remember making.
- You get a bill or invoice for financial activity you don't recognize or medical services you didn't receive.
- Your credit report lists accounts or liabilities you don't recognize.
- You are contacted by a debt collector about a debt you don't owe.
- You have trouble filing your taxes because the Internal Revenue Service says it already has a return from you.
- You receive notice from a bank or company you do business with that it has suffered a data breach.

How to protect yourself

- Use security software on your devices, and keep it updated.
- Set up online access to your bank and credit card accounts. Check them regularly and contact the bank or card provider immediately if you spot any suspicious activity.
- Switch to paperless billing and financial statements, so you get less sensitive information in the mail.
- Check your credit reports. Experian, Equifax and TransUnion are the nation's three main credit reporting companies, but you can access all of your credit reports through one website, AnnualCreditReport.com. The federal Consumer Finance Protection Bureau (CFPB) recommends checking them at least once every 12 months to make sure they're accurate and complete.
- Consider putting a fraud alert or freeze on your credit report. A freeze prevents anyone from opening a credit account in your name; an alert requires prospective lenders or creditors to verify your identity.
- File your tax return as early as possible. Tax ID thieves who've obtained your personal information will try to beat you to it.
- Shred bank statements, tax forms, medical bills and other documents containing personal or financial data before you throw them out.
- Use a PIN or other type of passcode for unlocking laptops, tablets and smartphones. If a device is lost or stolen, a code will make it harder for thieves to get at what's on it.
- Create strong and varied passwords, and use two-factor authentication if available — it prevents people from accessing your accounts with just the password.
- Leave your Social Security card at home in a secure place, and carry documents with your Social Security number on them only when necessary.
- Never give out your Social Security number or other personal information over the phone unless you are certain who's asking for it and why..

DEVORE RURAL PROTECTION ASSOCIATION

BRINGING FORTH THE CONSENSUS OF THE COMMUNITY. KEEPING YOU INFORMED



Devore History

Below-Professor **Steven G. Lee, Ed.D.**, Associate Professor of Education, High Desert Campus, University of La Verne, the new owner of Mom's Country Store, is just waiting for the doors he ordered to arrive, and he can have Mom's Store open once again. It will feature an ice cream and sandwich corner left of the entry



Thank you Alice Hall for sharing the amazing history of the beautiful community of Devore



Above-In 1976 **Mom and Buzz England** sold the business they had run for 22 years. They did not sell the property or building, and that caused some problems for future managers. Sun photo by **Greg Schneider**, whom this editor met on a flight to Tahoe in the early 1970s where he was going to receive a photography award and I had a goat classification assignment. During the Panorama Fire when **Roger Hall** was not allowed to drive home, **Greg**, press pass in hand, gave him a lift. (**Margie Boone** drove him even further.) **Greg** also took the photos for a Sun feature on Hallcienda, and we have stayed in contact through the years.



DEVORE



Above- The end of an era? Mom's Country Store in 1999 with a "for sale" sign on it. Left- **Guy Nolan** in 1993 playing Santa and handing out candy canes to children who came to the store, in this case **Seth and Katie Hade** in the arms of her mother **Becky**. Photos compliments of **Becky Hade**, who laments the closing of the store. "Mom's Store and the **Hellers** epitomized to me what Devore is all about. It broke my heart when they left the store. "After the **Englands** left, Mom's was run consecutively by **Dorrie Robinson** of Lytle Creek and **Lucky Godwin** before the **Hellers** made their very successful and popular run of the place. Slowly work is being done on the building with a promise of a new opening by **Dr. Steve Lee** some day soon.



Above left-Devore 's "good old boys" hang out at Moms in the 1990s. Left to right are **Jerry Heller**, proprietor, **Chet Bonkowski**, **Tom Adams**, **Andy Merenda**, and **Bill Crawford**.



Photo by **Steve Avila** compliments of **Jerry Heller**. Above right-**Debbie and Jerry Heller**, managers of Mom's Store through the 1990s. Lower right-Devore 's "good oldboys" hang out in Mom's Store in this Sun photo in 1971. Seated from left are: **Merle Hicks**, **David Kalf**, and **Tom Gladwill**. Standing are **Leonard Moreno**, and **H.D. (Buzz) England**.



MOM'S COUNTRY STORE
American Owned & Operated
for 42 years
2022 Sanborn Avenue, San Diego, CA 92171 329-007-2026

A Bit of the Past
Lena England was MOM to all of Devore. The original owner of Mom's Country Store. Established a gift shop at the current location in 1955. She saw the need to carry a little bit of everything. It became a gathering place for the people of the community.

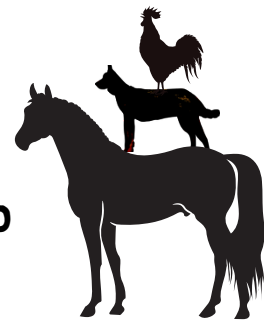
Mrs. Lena "MOM" England
Devore, California
Beverly Hills
"Value Resale, Organ, FAX Service
Open 7 days a week. 1000 store in year
Thank Memorial Hall for the Sun photo"

Post Office Postal Parcel Shipper

owner. Lower left-The ad for the reopening of Mom's Store designed by **Debbie Heller**. All photos from the Heller collection.

DEVORE RURAL PROTECTION ASSOCIATION

BRINGING FORTH THE CONSENSUS OF THE COMMUNITY. KEEPING YOU INFORMED



CRIME AND SAFETY

CABLE CANYON TRAIL RIDES

WE OFFER TRAIL RIDES, PONY RIDES, PHOTO SHOOTS, BIRTHDAY PARTIES, AND RIDING LESSONS.

CONTACT BECKY
(951) 201-3928

MAKE APPOINTMENT TODAY!

CB
COLDWELL BANKER
HOME SOURCE
KARAN SLOBOM
REALTOR®
Call: 909-278-9896
DRE # 02060481
KaranS@cbhomesource.com

CB

Ph: 760-684-8100
12138 Industrial Blvd. Suite 102 • Victorville, CA 92380
www.CBhomesource.com

DEVORE SHIRTS

FOR SALE

Colors: ROYAL BLUE, GREEN, GREEN, GRAY
** CHOOSE ANIMALS OR MOUNTAINS

.S, M, L, XL = \$20
2X & 3X = \$25



Available
GRAY Mountain:
2X,3X

ROYAL BLUE MOUNTAIN:
M, L,2X



GREEN MOUNTAIN
3X

GRAY Animal: L, 3X

ROYAL BLUE ANIMAL
M,3X



ADVERTISING

BUSINESS CARD SIZE... \$25.00. PER NEWSLETTER
1/4 PAGE... \$ 50.00.. PER NEWSLETTER
1/2 PAGE... \$75.00.PER NEWSLETTER
FULL-PAGE... \$100.00.PER NEWSLETTER

SUBMIT AD PAYMENT TO :
DRPA

FOR Orders CALL KARAN SLOBOM (909)278-9896 or
Email: KaranSlobom@yahoo.com
Provide Name & Telephone Number. TO COMPLETE THE
order GIVE THE Size, Color & STATE ANIMAL, OR MOUNTAIN