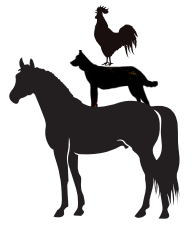


DEVORE RURAL PROTECTION ASSOCIATION

APRIL 2024



THE GREAT DEVORE EGG EASTER EGGSTRAVAGANZA



Thank you, Easter Bunny, for your fuzzy ears and soft hops that brought more than just treats, it once again brought our community together in celebration of spring's bounty. The DRPA thanks you for being a cherished part of the community Easter tradition.



Devore Water Company

The Water Company has been making great strides in a positive direction. We are on track to ensure that all customers are receiving accurate monthly bills. We would also like to thank all of the volunteers who help each month to make this possible. We continue to put new processes in place to ensure future stability for our water company. Our hours of operation continue to be Monday-Thursday 8 am-4:30 pm. Thank you to a local Devore resident, we now have an outdoor bulletin board that is accessible 24 hours a day. This board will be used to post the monthly agenda and important water company information. Have questions, comments, or concerns? Please join us at our next water board meeting on April 9, 2024, at 7 pm at the Devore Water Company.

The DRPA and Devore Community congratulates Detective Mc Daniel to has been promoted to Sergeant – Detective Mc Daniel has been a valuable liaison for our community.



2024
CHIPPING DATES
10:00-2:00PM



DIVISION 13 WILDLAND AND AIR OPS

Devore

June 9th

Build defensible space around your home. Residents are invited to bring your brush and branches.

Drop off location

Fire Station 2

More Information



SBCFIRE.ORG



FireSafe
COUNCIL

2ND ANNUAL

SADDLE UP FOR ST. JUDE 2024

SAVE THE DATE!

SATURDAY, MAY 18, 2024



SHERIFF'S RODEO GROUNDS
11755 GLEN HELEN PKWY
SAN BERNARDINO CA, 92407



Call Karan for Information
(909) 278-9896



OBSTACLE COURSE & TRAIL RIDE, VIRTUAL 5K WITH YOUR HORSE, RAFFLE, PONY RIDES, PETTING ZOO, VENDERS, BAND, FOOD, & MORE!



COLDWELL
BANKER
HOME SOURCE

Safety Hotlines



This QR Code will allow residents to submit complaints/requests for Caltrans to do maintenance on roads (ex. encampments, litter, graffiti, illegal dumping, and road improvements,etc)



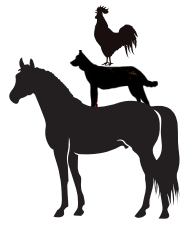
The California Department of Transportation (Caltrans) owns or controls 350,000 acres of Right of Way and maintains 15,133 centerline miles of highway and 13,063 state highway bridges. Caltrans also inspects more than 12,200 local bridges.



SEE PHOTOS OF YOUR MAIL BEFORE IT ARRIVES, START YOUR MORNINGS WITH A PREVIEW OF YOUR DAY'S USPS® MAIL AND PACKAGES WITH INFORMED DELIVERY® **NOTIFICATIONS:** GET DAILY DIGEST EMAILS THAT PREVIEW YOUR MAIL AND PACKAGES SCHEDULED TO ARRIVE SOON. SEE IMAGES OF YOUR INCOMING LETTER-SIZED MAIL (GRAYSCALE, ADDRESS SIDE ONLY).1 TRACK AND MANAGE YOUR PACKAGES IN ONE CONVENIENT PLACE.

DEVORE RURAL PROTECTION ASSOCIATION

Silverwood Project



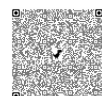
Silverwood is a new community in the Inland Empire expected to create a multi-billion-dollar economic impact in Hesperia, Victorville, and other nearby cities and towns.

At more than 9,000 acres in size and entitled for more than 15,000 new homes, Silverwood will be one of the largest new communities developed in Southern California in many years. Situated at approximately 3,200 feet of elevation, Silverwood features towering views of the surrounding mountains in the Angeles and San Bernardino National Forests.

The 700,000 square feet of retail and commercial space include a library, post office, fire stations, public schools and walkable, well-planned town squares with stores. 4,900 acres of open space is planned and will include parks, amphitheatres and 167 miles of trails. Silverwood seeks to evoke a welcoming small-town California feel, enabling walkability and neighborly ties while celebrating its connection to nature. Plus, it will include several sustainable elements such as solar power for all homes and businesses along with a new state-of-the-art wastewater plant, and extensive use of recycled water for landscaping.

The Silverwood community will create the opportunity for thousands of families to live in a gorgeous mountain setting with endless opportunities for outdoor recreation, all within a reasonable commute to San Bernardino, Riverside, Ontario, and other existing employment hubs.

For more information scan QR Code



silverwoodcalifornia.com

****Although we try to provide quality information, we do not guarantee of results obtained from the use of this information, and without warranty of any kind, express or implied, including, but not limited to warranties of performance for a particular purpose.****



International Gateway Barstow Project



The 4,500-acre, \$1.5 billion facility will be the first of its type in North America. The new integrated rail facility will be on the west side of Barstow, consisting of a railyard, intermodal facility and warehouses for transloading freight from smaller international containers to larger domestic containers. BIG will optimize BNSF's rail and distribution efficiency regionally and across the U.S. supply chain. It will also reduce truck traffic and freeway congestion in the Los Angeles Basin and the Inland Empire.

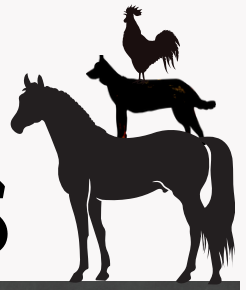
A timetable for the project will depend on permitting studies that are underway now. BIG will allow the direct transfer of containers from ships at the Ports of Los Angeles and Long Beach to trains headed to BNSF's mainline up to Barstow, about 130 miles away, also via the Alameda Corridor. Barstow's location is ideal because it connects Northern and Southern California to our Southern Transcon, our most efficient way to deliver goods into the interior U.S. to places like Chicago, Kansas City, Memphis, Tennessee, and Alliance, Texas.

Scan QR for more information



www.bnsf.com

DEVORE RURAL PROTECTION ASSOCIATION Community Updates



DEVORE COMMUNITY CHURCH

Community Church of Devore
1431 Devore Road
San Bernardino, CA 92407
Contact: devoretruth@gmail.com
(909) 880-4160



Service Times
Sunday: 10:30 AM
Wednesday: 6:30 PM- Evening Service

NEED FOOD

Wednesday 4:30PM to 5:30PM
Address: 1431 Devore rd.

EVERY WEDNESDAY THERE WILL BE A FOOD GIVE AWAY AT THE DEVORE COMMUNITY CHURCH
If you need food before or after Wednesday please call Roy at 909 495-5261

DON'T FORGET

- Devore Water Company meeting 4/9/24 7pm
- DRPA meeting May 6 at 6:30
 - GHA Traffic Art Laboe-May 11, 2024
 - Everyone Saddle Up for St. Jude Ride donation event - Sheriff Rodeo Grounds- May 18th at 9AM
 - Pancake breakfast Devore Fire Station 2 DRPA fundraiser June 9th at 10AM

ALL DEVORE RESIDENTS ADVERTISE FOR FREE



2024 DEVORE T-SHIRTS

T-shirt Decals



S-XL = \$20 2X-3X = \$25

All decals (mountains or animal) available in Blue, Green, Grey

CONTACT: KARAN SLOBOM (909) 278-9896.

ADVERTISING PRICES

PRICING IS PER NEWSLETTER

BUSINESS CARD SIZE... \$25

1/4 PAGE... \$50

1/2 PAGE... \$75

FULL-PAGE... \$100

SUBMIT AD PAYMENT TO : DRPA
CASH/CARD/CHECK IS ACCEPTED

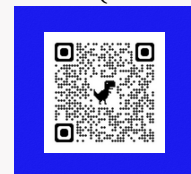


Devore's NEW facebook page
Devore Community
Updates and Support

This is an open uncensored discussion space for residents to keep the community up to date on crime/safety ,advertisements, etc. We want the community to ALWAYS stay updated.

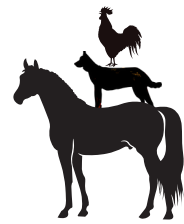
DRPA Website

DRPA QR Code



DRPA.COM

DEVORE RURAL PROTECTION ASSOCIATION



Advertisements



"GROWING FOOD FOR YOUR FAMILY AND FRIENDS"



DEVORE RD. AND BUCKTHORN IN DEVORE

BRADS BEE SERVICES
909-239-2755
CALL FOR QUOTE
SERVING SAN BERNADINO COUNTY AND SURROUNDING AREAS
SPECIALIZING LIVE BEE REMOVAL

CABLE CANYON TRAIL RIDES

WE OFFER TRAIL RIDES, PONY RIDES, PHOTO SHOOTS, BIRTHDAY PARTIES, AND RIDING LESSONS.
CONTACT BECKY (951) 201-3928
 MAKE APPOINTMENT TODAY!

COLDWELL BANKER HOME SOURCE
KARAN SLOBCHIN
 REALTOR®
 Cell: 909-279-9926
 DPE #: 02050481
 Karan@cbhomesources.com

Ph: 760-654-8100
 12138 Industrial Blvd., Suite 102 • Victorville, CA 92256
 www.cbhomesources.com

STEPHENS POOP PATROL

909-856-2830

WEEKLY DOG POOP PICK UP SERVICE

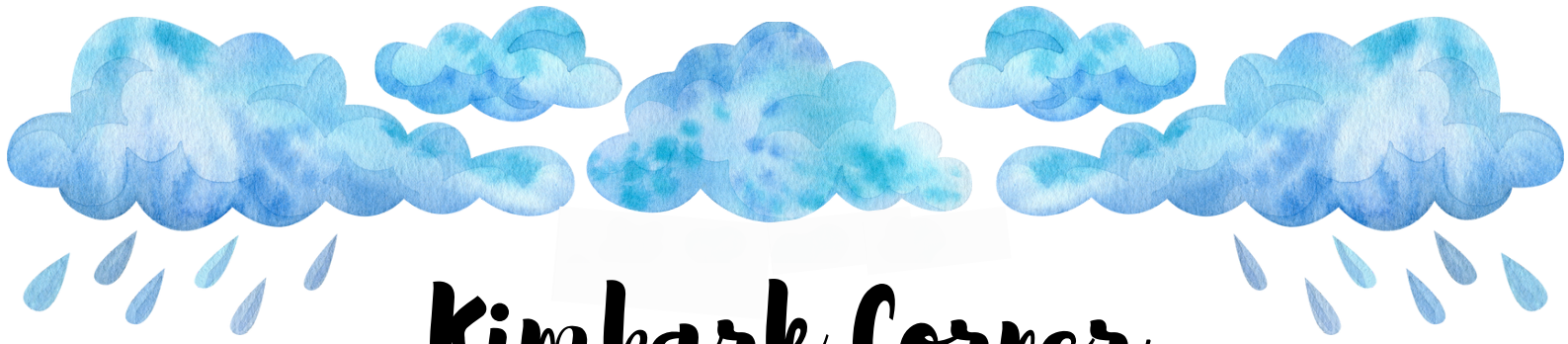
MONDAY-THURSDAY 7AM-12PM
 SATURDAY 8AM-2PM

WEEKLY -\$20 PER DOG
 FIRST TIME PICK UP FEE-\$35

TWIN RIDGE
 WELDING
 ★ ★ ★

Custom Gates - Fencing - Fabrication
Plasma Cutting - Ironwork - Handrails - Etc.

Maxwell Pate 909-697-7525
 Twinridgewelding.com
 License #1087917



Kimbark Corner

April 4th - School Librarian Appreciation Day

April 11th - PTO Spring Field Day

April 23rd - Snack and Chat with Mrs Fitz @ 3:45pm

April 24th - Spring Music Concert

April 25th - KEEP Night

May Save The Dates



May 6th - Fun Run

May 6th to 10th - Staff Appreciation Week

May 21st - Snack and Chat with Mrs Fitz @ 3:45PM

May 27th - NO SCHOOL

May 28th - TK Promotion

May 29th - 6th Grade Promotion

May 30th - Kinder Promotion

May 30th - LAST DAY OF SCHOOL



DEVORE FOOD DRIVE

**LOCATION: DEVORE COMMUNITY CHURCH
1431 DEVORE RD**

WE ARE OPEN EACH WEDNESDAY

4:30 PM - 5:30 PM FOR FOOD DISTRIBUTION



**If unable to pick it up on Wednesday Moms Shop
will be handing out food**

DEE DENTON - 909-289-6823



St Jude 5K Virtual Run Opens April 1st thru May 31st

5 categories:

Runner leading not riding:

Horse

Mule/F

Donkey

Mini horse or donkey

Riding:

18 and over

17 and under

Prizes to fifth place.

Use your favorite running app to submit your time.

This is a medal-only race.

Entry fee \$20.00

All participants will get a medal. All profits go to St Jude's!!

**Contact Noretta Barker for additional information
760-382-1461**